

TIGER TIMES

PLEASANT LEA MIDDLE SCHOOL

DECEMBER 20, 2017

NO.16


630 SW Persels Road
816-986-1175

Lee's Summit, MO 64081

Dr. Janette Miller, Principal
Janette.Miller@lsr7.net

Mrs. Kimberly Alonzo
7th Grade Assistant Principal
Kimberly.Alonzo@lsr7.net

Dr. Joe Dan Vendelin
8th Grade Assistant Principal
Joedan.Vendelin@lsr7.net

 @JanetteMillerPL

 @PLMS@1971

 @JDVENDELIN

 PLMS_Principal

 PLMSTIGERS

DECEMBER HIGH 5 AWARD WINNERS



December High 5 is from the Science Department and our winners are from R to L: Aaliyah Roland, Raven Ryan, Hannah Tai and Alex Lynch.



WEDNESDAY, DECEMBER, 20

NOT A LATE START
HOLIDAY ASSEMBLY
EARLY RELEASE @ 11:55 a.m.

WINTER BREAK UNTIL JANUARY 3



SPELLING BEE CONTESTANTS

Our apologies, but these pictures have been omitted from the newsletter. We want to extend our appreciation to each student who participated in the November 14, 2017 PLMS Spelling Bee



TIPS, CARE & TECHNOLOGY USAGE FOR CHROMEBOOKS OVER THE HOLIDAYS

With the holiday break approaching, we wanted to share important information and tips related to usage of Google Chromebooks and time away from school. The following is provided to families and focuses on online safety, digital citizenship and appropriate usage of technology. We also remind families to not leave Chromebooks at airports or at family members' homes. Good care should be taken of the device to avoid damage or lost devices.



Talk to your child about...

- Emphasize that Google Chromebooks and Google Apps for Education are school devices designed to enhance instruction, make it easier for students to collaborate with each other and their teachers and to provide another learning tool within our schools.

- Although the Google Chromebook is a school device, it is appropriate and recommended that parents and other caregivers (grandparents, child-care professionals, etc.) set limits on use of technology at home.
 - **Set screen-time limits:** For example, many parents set limits on the amount of screen time children are allotted each day, especially technology usage that is not related to school assignments or projects.
 - **Set no-technology times:** Another recommendation is that digital devices be placed away from children during specific times of day, such as mealtime, and be inaccessible by children at bedtime.
- Parents are also encouraged to make sure they are aware of any homework their children have been assigned to complete during winter break to help monitor appropriate use of Chromebooks. Parents can reach out to their children's teachers for this list or access teachers' online homework calendar if this is available.
- Parents are also encouraged to continue to reinforce appropriate behavior related to technology usage. This includes no bullying, no inappropriate chatting, etc. Additional tips are provided within this document.

How to help children unplug over the holidays

Common Sense Media, a website that includes information for parents about children and technology, offers a helpful article about how to help balance children's technology usage with family time and other activities. The article is available at <https://www.commonsensemedia.org/blog/8-ways-to-unplug-your-holidays#>.

Online Safety Tips

Parents are encouraged to emphasize the following online rules for children at home.

- Never give out personal information such as address, telephone numbers, parents' name or work address/telephone number without parent permission.
- Tell parents right away if they come across something online that makes them feel uncomfortable.
- Talk to parents about posting pictures of themselves online.
- Do not respond to any messages that are mean or make children feel uncomfortable.
- Never give out passwords to anyone other than parents.
- Follow the rules of digital citizenship, including never posting anything online that hurts others.

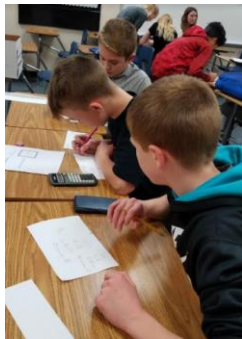
Connect2Learn

one-to-one Chromebooks



HIGHLIGHTS FROM MRS. GREENS MATH CLASSES THIS WEEK

Mrs. Green's students had to solve multi-step equations to get the correct numbers to make combination locks open. The students were busy working to get those combination locks open.



PARENTING WITH LOVE AND LOGIC HOSTED BY PLMS

Tuesdays, January 9th through January 30 6:30p.m. to 8:00p.m.



PARENTING

With LOVE AND LOGIC[®]

PRESENTED BY LEE'S SUMMIT CARES

When parenting youth, the focus is often on the early years. However; as youth transition through adolescents to adulthood their parental needs change. Wise parents learn how to adapt their parenting approach to guide their teens toward a successful future. Join other parents of teens and learn the following and much more.

How to maintain a positive relationship
How brain development impacts behavior
How to help your teen handle peer pressure

Communication strategies that work
How to set limits you can enforce
How to reduce your parenting stress

Parenting the Love and Logic Way
(A special offering for parents of youth 11 to 18 years of age)
Pleasant Lea Middle School
630 SW Persels Rd.

Tuesdays, January 9 through January 30
6:30 to 8:00 pm

The cost for the class is \$50 per person. Previous participants may return to this class for free. Scholarships are available to residents who live within the Lee's Summit, R-7 school district boundaries.

January 2018 | Parenting Teens

***Please register by Jan 8**

Name: _____ Phone: _____

Mailing or email address: _____

Circle Payment Method: Cash Check Scholarship (Contact Bev 816-347-3259)

To register with a credit card, click here or go to www.LSCares.org/loveandlogic

If not registering online, please mail check with completed form to:



ReDiscover c/o Bev Hatley | 1555 NE Rice Rd. | Lee's Summit, MO 64086 (816)-347-3259

Lee's Summit CARES has offered the Becoming a Love and Logic Parent program for 18 years through a collaborative relationship with ReDiscover and the Lee's Summit R-7 School District. Scholarships are available to residents who live within the Lee's Summit, R7 School District boundaries.

\$20 SPORTS PHYSICALS

If your student will be participating in any school sponsored sports this spring or anytime in the 2018-2019 academic year, low cost sports physicals are being offered.

FEBRUARY 3	LSWHS (front entrance)
8am – 10:30am	
FEBRUARY 17	LSNHS (FH/PAC ENTRANCE)
8am – 10:30am	

\$20 Preregistration

\$25 Walk-ins (cash or check only)

- * Sign up on LSHS Sports Webpage under the Camp/Activities tab.
- * MSHSAA PHYSICAL forms are available in the STAD OFFICE or on the LSHS Sports Webpage. Please have page 1 filled out before arriving.

Go to LSHS webpage to access Privit, complete your information, and upload the form.

These physicals will be good for the entire 2018-2019 school year.